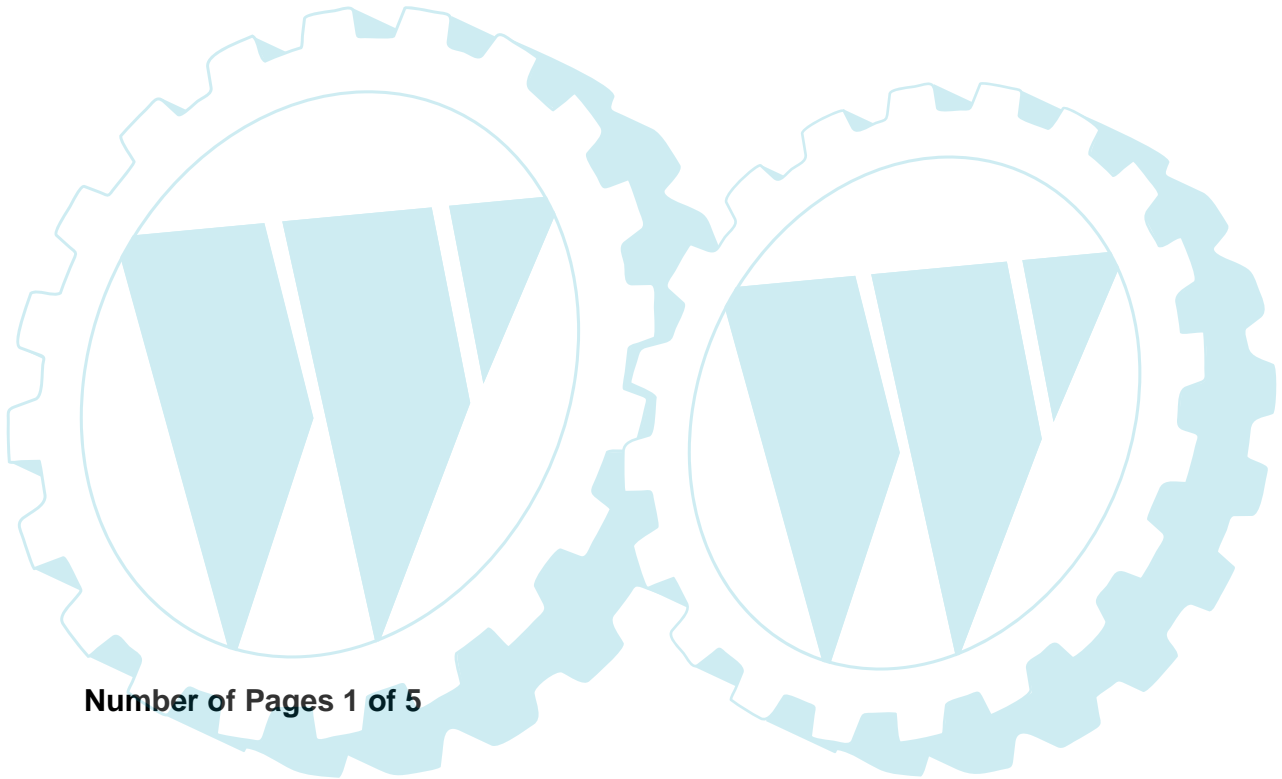


ELECTROLUX OUTDOOR PRODUCTS

| PNC | Type/Prefix/nd | Model | Brand |
|------------|-----------------------|--------------|--------------|
| 953900423 | 03 | CABRIO 290 | McCULLOCH |
| 953900243 | 03 | CABRIO 251 | McCULLOCH |
| 953900453 | 03 | CABRIO 262 | McCULLOCH |
| 953900446 | 03 | B 290 | PARTNER |
| 953900251 | 03 | B 251 | PARTNER |



Number of Pages 1 of 5

| | |
|---|-----------------------------|
| Factory: IIQ - Valmadrera | Product Group: OP 93 |
| Publication Number: EIPL2005_VP0504002 | Petrol Portable |
| Publication Date: 07/04/05 | Sub Group 9433 |

 **The Electrolux Group. The world's No.1 choice.**

FIGURE 1

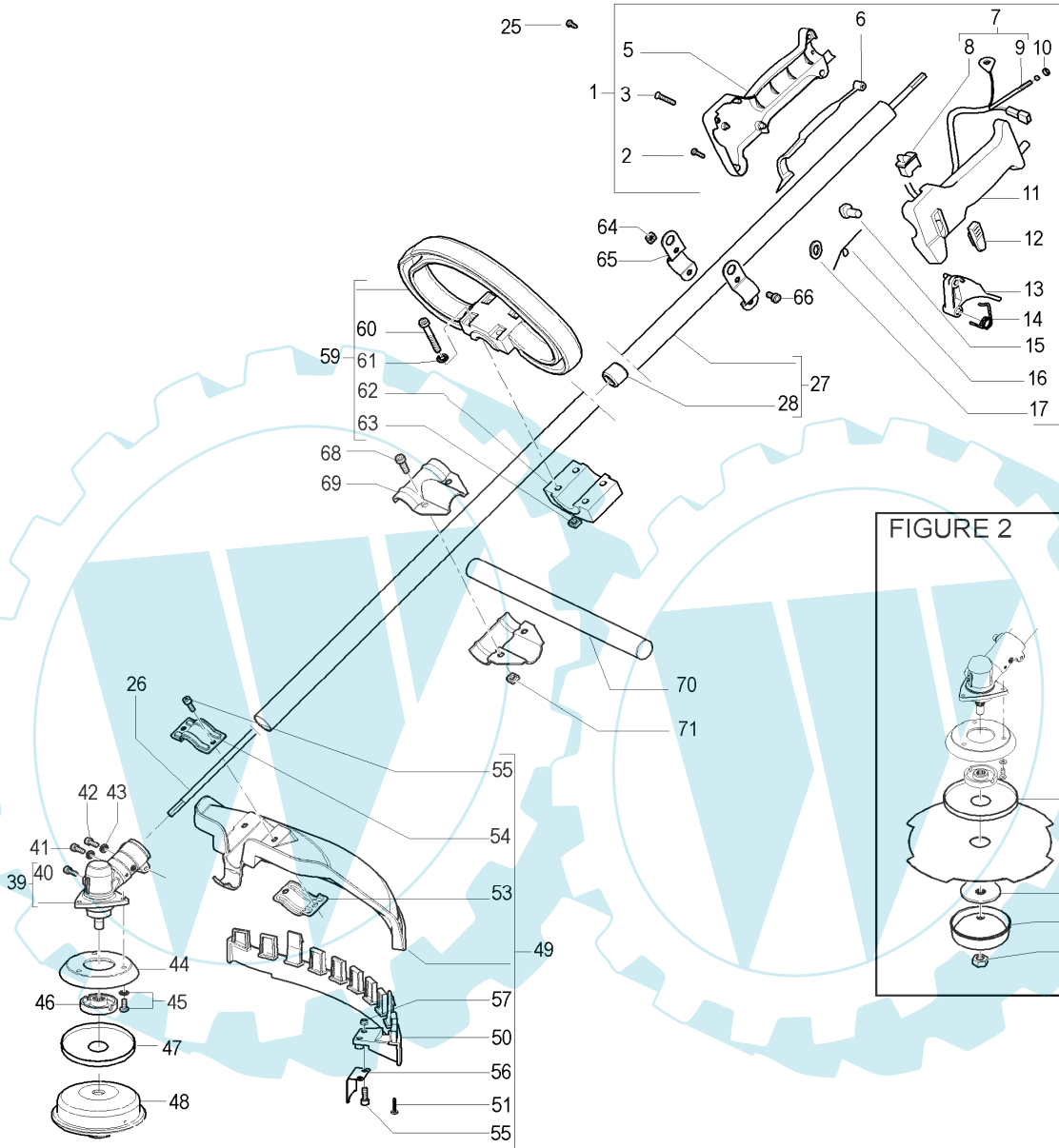


FIGURE 2

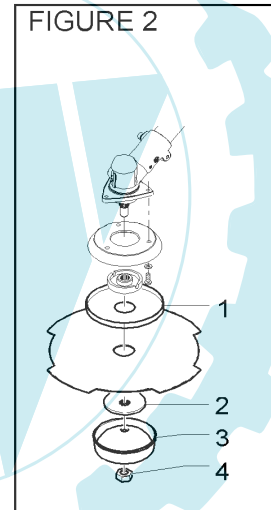
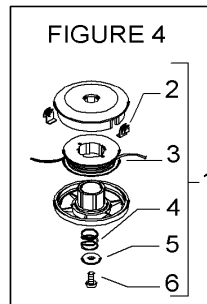


FIGURE 4



 **The Electrolux Group. The world's No.1 choice.**

Item P/N McC P/N ELX Qty DESCRIPTION

Item P/N McC P/N ELX Qty DESCRIPTION

FIGURE 1

| | | | | |
|------|-----------|-----------|---|--------------------------|
| 1 | 227280 | 538227280 | 1 | trigger box assy |
| 2 | • 240618 | 538240618 | 2 | screw 3x16 |
| 3 | • 240883 | 538240883 | 4 | screw 3x20 |
| 5 | • 229836 | 538229836 | 1 | half trigger box (right) |
| 6 | • 229819 | 538229819 | 1 | safety lever |
| 7 | • 227067 | 538227067 | 1 | cable/switch assy |
| 8 | •• 236394 | 538236394 | 1 | switch |
| 9 | •• 227053 | 538227053 | 1 | gas cable |
| 10 | • 235912 | 538235912 | 1 | nut M6 |
| 11 | • 229837 | 538229837 | 1 | half trigger box (left) |
| 12 | • 229824 | 538229824 | 1 | throttle advance slide |
| 13 | • 241296 | 538241296 | 1 | throttle trigger |
| 14 | • 240019 | 538240019 | 1 | throttle trigger spring |
| 15 | • 229823 | 538229823 | 1 | throttle advance pin |
| 16 | • 229973 | 538229973 | 1 | throttle advance spring |
| 17 | • 227065 | 538227065 | 1 | retain |
| 25 | 236981 | 538236981 | 2 | screw |
| 26 | 240486 | 538240486 | 1 | drive shaft |
| 27 | 242442 | 538242442 | 1 | shaft assy |
| 28 | • 228192 | 538228192 | 5 | bushing |
| 39 | 242728 | 538242728 | 1 | gear box |
| 40 | • 240151 | 538240151 | 1 | screw M8x10 |
| 41 | 235802 | 538235802 | 1 | screw 5x14 |
| 42 | 235803 | 538235803 | 1 | screw 5x25 |
| 43 | 236529 | 538236529 | 2 | split washer |
| 44 | 242729 | 538242729 | 1 | flange adapter |
| 45 | 240688 | 538240688 | 3 | screw M5 and washer |
| A 46 | 242815 | 538242815 | 1 | flange |
| B 47 | 241155 | 538241155 | 1 | spacer |
| A 48 | | FIGURE 4 | 1 | string head |
| B 49 | 249155 | 538249155 | 1 | guard ass'y |
| B 50 | • 242644 | 538242644 | 1 | guard extension |
| 51 | • 240862 | 538240862 | 1 | screw M5x14 |
| 53 | • 242752 | 538242752 | 1 | lower clamp |
| 54 | • 242629 | 538242629 | 1 | upper clamp |
| 55 | • 227563 | 538227563 | 4 | screw M5x16 |
| 56 | • 241973 | 538241973 | 1 | line cutter |
| 57 | • 229208 | 538229208 | 2 | nut |
| 59 | 227068 | 538227068 | 1 | front handle assy |
| 60 | • 228320 | 538228320 | 4 | screw |
| 61 | • 236936 | 538236936 | 4 | washer |
| 62 | • 227046 | 538227046 | 1 | clamp |
| 63 | • 236642 | 538236642 | 4 | nut |

| | | | | |
|----|--------|-----------|---|-------------------------|
| 64 | 236642 | 538236642 | 2 | nut M6 |
| 65 | 228152 | 538228152 | 2 | harness clamp (1 half) |
| 66 | 235911 | 538235911 | 2 | screw M6x12 |
| 68 | 235911 | 538235911 | 2 | screw |
| 69 | 228146 | 538228146 | 2 | safety pole guard clamp |
| 70 | 246864 | 538246864 | 1 | safety pole guard |
| 71 | 236642 | 538236642 | 2 | nut |

FIGURE 2

| | | | | |
|-----|--------|-----------|---|-------------|
| B 1 | 241155 | 538241155 | 1 | flange |
| A 2 | 241006 | 538241006 | 1 | plate blade |
| A 3 | 236596 | 538236596 | 1 | cup |
| A 4 | 240481 | 538240481 | 1 | nut |

FIGURE 4 STRING HEAD

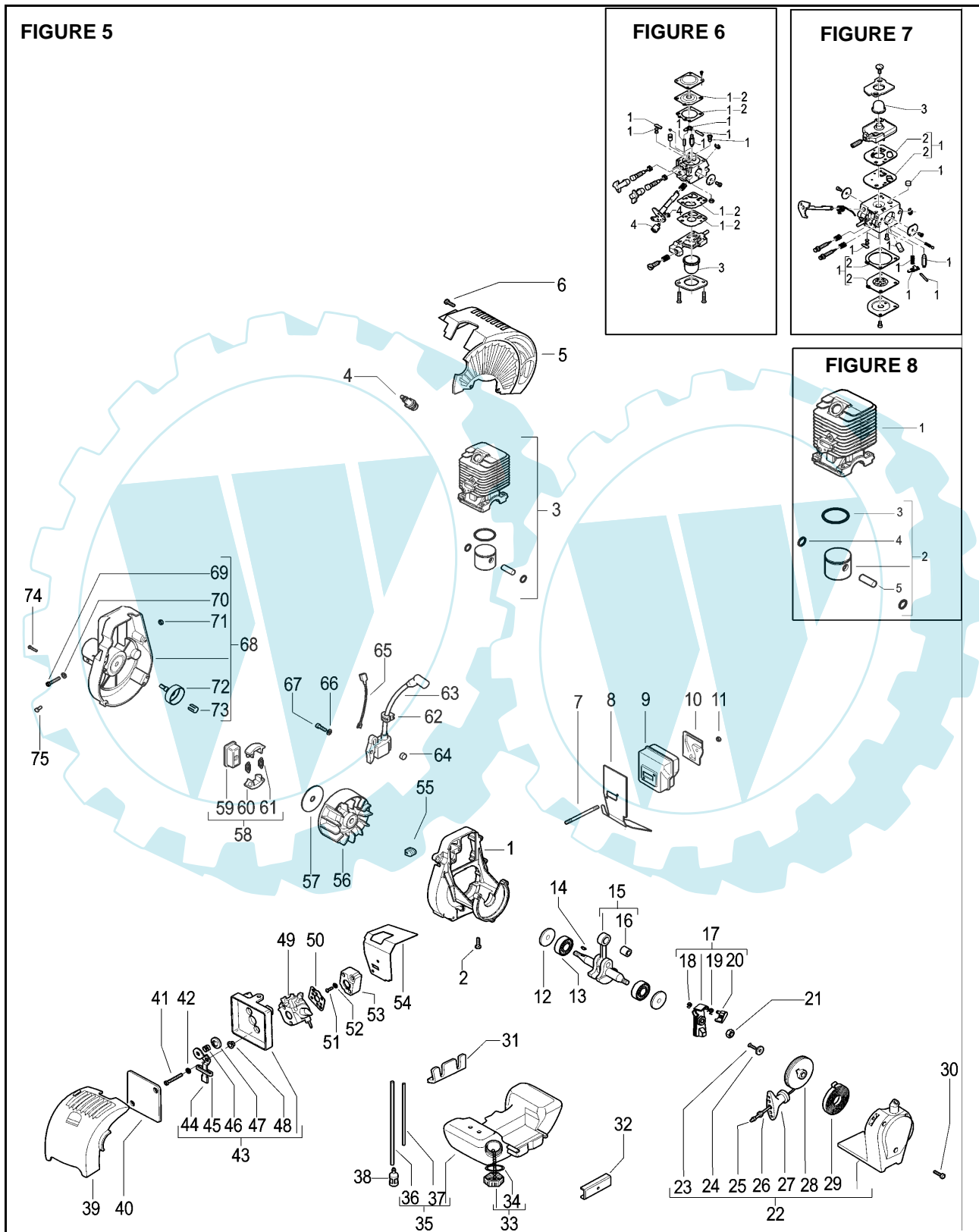
| | | | | |
|-----|-----------|-----------|---|---------------|
| A 1 | 538249174 | 538249174 | 1 | string head |
| B 2 | • 241554 | 538241554 | 2 | eyelet |
| B 3 | • 247395B | 538047395 | 1 | 2 line spools |
| 4 | • 240852 | 538240852 | 1 | spring |
| 5 | • 5210 | 538005210 | 1 | locking nut |
| 6 | • 229712 | 538229712 | 1 | screw 5x16 |

A=ALTA ROTAZIONE
B=MEDIA ROTAZIONE
C=ALTA ROTAZIONE
NUOVI CODICI

A=HIGH MOVING
B=MEDIUM MOVING
C=SLOW MOVING
NEW P. NUMBERS

A=HAUTE DEMANDE
B=MOYENNE DEMANDE
C=BASSE DEMANDE
NOUVELLES REFERENCES

A=GROBE NACHFRAGE
B=MITTELMAESSIGE
C=WENIGE NACHFRAGE
NEU CODEX



 **The Electrolux Group. The world's No.1 choice.**

| Item | P/N McC | P/N ELX | Qty | DESCRIPTION |
|-----------------|----------------------------|-----------|-----|-------------------------------|
| FIGURE 5 | | | | |
| 1 | 242802 | 538242802 | 1 | crankcase |
| 2 | 227565 | 538227565 | 4 | screw M5x25 |
| 3 | FIGURE 8 | | | |
| A 4 | 92879 | 538092879 | 1 | spark plug RDJ8J |
| 5 | 242704 | 538242704 | 1 | engine cover |
| 6 | 241963 | 538241963 | 2 | screw M4x22 |
| 7 | 242037 | 538242037 | 2 | stud bolt |
| B 8 | 243273 | 538243273 | 1 | exhaust gasket |
| C 9 | 242131 | 538242131 | 1 | muffler |
| 10 | 323760 | 538323760 | 1 | muffler shield |
| 11 | 235642 | 538235642 | 2 | nut M5 |
| C 12 | 242994 | 538242994 | 2 | seal |
| C 13 | 241594 | 538241594 | 2 | ball bearing |
| C 14 | 227631 | 538227631 | 1 | key |
| 15 | 242003 | 538242003 | 1 | crankshaft assy |
| C 16 | • 235742 | 538235742 | 1 | needle bearing |
| 17 | 241784 | 538241784 | 1 | starter pawl assy |
| 18 | • 111088 | 538111088 | 1 | snap ring |
| 19 | • 241782 | 538241782 | 1 | spring |
| 20 | • 241781 | 538241781 | 1 | pawl |
| 21 | 235248 | 538235248 | 1 | nut |
| C 22 | 242041 | 538242041 | 1 | starter assy |
| 23 | • 240862 | 538240862 | 1 | screw M4x18 |
| 24 | • 241703 | 538241703 | 1 | washer |
| A 25 | • 241746 | 538241746 | 1 | rope |
| 26 | • 235612 | 538235612 | 1 | washer |
| 27 | • 241778 | 538241778 | 1 | handle |
| B 28 | • 241620 | 538241620 | 1 | pulley |
| B 29 | • 241619 | 538241619 | 1 | spring |
| 30 | 241963 | 538241963 | 3 | screw M4x20 |
| 31 | 242038 | 538242038 | 1 | tank grommet (crankcase side) |
| 32 | 242039 | 538242039 | 1 | tank grommet (starter side) |
| B 33 | 242484 | 538242484 | 1 | fuel tank cap assy |
| A 34 | • 236564 | 538236564 | 1 | gasket |
| C 35 | 242040 | 538242040 | 1 | fuel tank assy |
| B 36 | • 229717 | 538229717 | 1 | hose |
| B 37 | • 229743 | 538229743 | 1 | primer bulb hose |
| A 38 | 93720 | 538093720 | 1 | fuel pickup |
| 39 | 242703 | 538242703 | 1 | air filter cover |
| B 40 | 242035 | 538242035 | 1 | air filter |
| 41 | 235808 | 538235808 | 2 | screw 5x50 |
| 42 | 235248 | 538235248 | 1 | washer |
| 43 | 248485 | 538248485 | 1 | air box assy |
| 44 | • 241769 | 538241769 | 1 | choke lever |
| 45 | • 241622 | 538241622 | 1 | choke lever grommet |
| 46 | • 235822 | 538235822 | 1 | spring |
| 47 | • 241602 | 538241602 | 1 | choke shutter |
| 48 | • 227022 | 538227022 | 2 | bushing |
| C 49 | FIGURE 6 / FIGURE 7 | | | |
| A 50 | 241600 | 538241600 | 1 | carb. Gasket |
| 51 | 235806 | 538235806 | 2 | screw M5x20 |
| 52 | 235248 | 538235248 | 2 | washer |

| Item | P/N McC | P/N ELX | Qty | DESCRIPTION |
|------|----------|-----------|-----|---------------|
| B 53 | 241750 | 538241750 | 1 | carb. Spacer |
| B 54 | 242860 | 538242860 | 1 | intake gasket |
| 55 | 241607 | 538241607 | 1 | grommet |
| 56 | 241796 | 538241796 | 1 | flywheel |
| 57 | 241604 | 538241604 | 1 | dust shield |
| B 58 | 241793 | 538241793 | 1 | clutch assy |
| 59 | • 241789 | 538241789 | 1 | clutch hub |
| 60 | • 241743 | 538241743 | 2 | clutch shoe |
| A 61 | • 241794 | 538241794 | 2 | clutch spring |
| 62 | 236322 | 538236322 | 1 | grommet |
| C 63 | 241749 | 538241749 | 1 | ignition coil |
| 64 | 227769 | 538227769 | 2 | spacers |
| 65 | 241606 | 538241606 | 1 | ground wire |
| 66 | 235248 | 538235248 | 2 | washer |
| 67 | 235803 | 538235803 | 2 | screw M5x25 |
| C 68 | 241725 | 538241725 | 1 | joint assy |
| 69 | • 235803 | 538235803 | 1 | screw M5x25 |
| 70 | • 235248 | 538235248 | 1 | washer |
| 71 | • 229524 | 538229524 | 1 | nut M5 |
| 72 | • 241785 | 538241785 | 1 | clutch drum |
| 73 | • 228260 | 538228260 | 1 | pin |
| 74 | 227568 | 538227568 | 4 | screw M4x20 |
| 75 | 236981 | 538236981 | 1 | screw |

| FIGURE 6 WALBRO WT 686 | | | | |
|-------------------------------|-----------|-----------|--|----------------|
| C - | 242932 | 538242932 | | carb. |
| B 1 | • 324013 | 538324013 | | K20 rep. Kit |
| A 2 | •• 324009 | 538324009 | | D20 gasket kit |
| C 3 | • 225834 | 538225834 | | primer bulb |
| 4 | • 224466 | 538224466 | | swivel kit |

| FIGURE 7 ZAMA C1Q M38 | | | | |
|------------------------------|-----------|-----------|--|------------------|
| C - | - | - | | carb. |
| B 1 | • 300465 | 538300465 | | RB-28 rep.kit |
| A 2 | •• 300473 | 538300473 | | diaph/gasket kit |
| C 3 | • 246946 | 538246946 | | primer bulb |

| FIGURE 8 cylinder, piston 25cc | | | | |
|---------------------------------------|----------|-----------|---|-------------|
| C 1 | 242803 | 538242803 | 1 | cylinder |
| C 2 | 248177 | 538248177 | 1 | piston kit |
| B 3 | • 240002 | 538240002 | 1 | piston ring |
| 4 | • 235008 | 538235008 | 2 | snap ring |
| 5 | • 241735 | 538241735 | 1 | piston pin |

| FIGURE 8 cylinder, piston 29cc | | | | |
|---------------------------------------|----------|-----------|---|-------------|
| C 1 | 243076 | 538243076 | 1 | cylinder |
| C 2 | 249179 | 538249179 | 1 | piston kit |
| B 3 | • 242602 | 538242602 | 1 | piston ring |
| 4 | • 235008 | 538235008 | 2 | snap ring |
| 5 | • 242030 | 538242030 | 1 | piston pin |

A=ALTA ROTAZIONE
B=MEDIA ROTAZIONE
C=ALTA ROTAZIONE
NUOVI CODICI

A=HIGH MOVING
B=MEDIUM MOVING
C=SLOW MOVING
NEW P. NUMBERS

A=HAUTE DEMANDE
B=MOYENNE DEMANDE
C=BASSE DEMANDE
NOUVELLES REFERENCES

A=GROBE NACHFRAGE
B=MITTELMAESSIGE
C=WENIGE NACHFRAGE
NEU CODEX

 **The Electrolux Group. The world's No.1 choice.**

Ihr Ersatzteilspezialist im Internet